

# Boomer Hook Strikes Employee

## SAFETY ALERT

ISSUE #: 07-2015

### Enform

Enform is the health and safety association for Canada's upstream oil and gas industry. We provide leading health and safety training, programs and services, touching the lives of hundreds of thousands of workers each year. We are dedicated to the continuous improvement of safety with a vision of eliminating work-related incidents or injuries in the upstream oil and gas industry.

### An Industry Product

This document was developed by industry for industry. Working collaboratively, Enform works with the submitting organization representative in developing these documents to improve the industry's hazard awareness. Canada's leading oil and gas industry trade associations support the use of shared information to help companies of all sizes improve performance.

### Disclaimer

This document is intended to be flexible in application and provide guidance to users rather than act as a prescriptive solution. Recognizing that one solution is not appropriate for all users and situations, it presents accepted guidance that generally apply to all situations. While Enform believes that the information contained herein is reliable under the conditions and subject to the limitations set out, Enform does not guarantee its accuracy. The use of this document or any information contained will be at the user's sole risk, regardless of any fault or negligence of Enform and the submitting organization.

### Copyright/Right to Reproduce

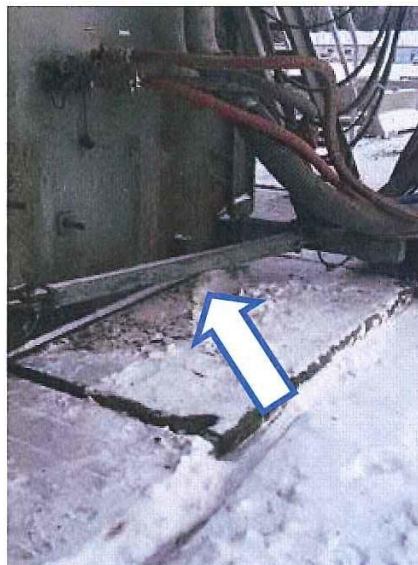
Copyright for this document is held by Enform, 2014. All rights reserved. Enform encourages the copying, reproduction and distribution of this document to promote health and safety in the workplace, provided that Enform is acknowledged. However, no part of this publication may be copied, reproduced or distributed for profit or other commercial enterprise, nor may any part be incorporated into any other publication, without written permission of Enform.

For more information on this event, please contact: [safety@enform.ca](mailto:safety@enform.ca)

## DESCRIPTION OF INCIDENT:

The incident occurred while walking a pad rig from one well to another. A pin pocket on the spreader bar, which pulls the suitcases behind the rig, broke. At that point, the move stopped. A chain and a ratchet boomer were attached to replace the spreader bar. This allowed workers to finish the move.

The spreader bar was not repaired prior to walking the rig again. As the crew began to walk the rig to the new well, the boomer broke. One of the boomer hooks flew over 10 meters and struck a worker. The worker's shoulder was injured from the impact.



Spreader Bar



Location of where ratchet Boomer was attached to replace spreader bar



Broken Connection Link on Ratchet Boomer

By industry, for industry





## WHAT CAUSED IT:

- The chain was not sufficient for the forces being applied.
- The spreader bar was not repaired prior to walking the rig again.
- Ratchet boomers are designed for securement. A ratchet boomer is never to be used for any kind of towing application.

## CORRECTIVE/PREVENTATIVE ACTIONS:

- If a load exceeds a chain's maximum capacity, the results can be catastrophic. As a result, chains will only be used for cargo securement.
- Use Management of Change for changes to equipment where a design issue or repeat failure has been identified to ensure any potential hazards of the change have been evaluated and effective safe guards are in place.

By industry, for industry

