

**SAFETY ALERT - #23 - 2009**  
**WORKER FALLS WHILE INSPECTING PIPING**  
**RELEASE DATE: DECEMBER 7, 2009**

<b>Function:</b> Production Operations	<b>Incident Date:</b> April 22, 2009
<b>Incident Type:</b> Contact with Pipe and Piping	<b>Country and Region:</b> Central Alberta, Canada

**Summary**

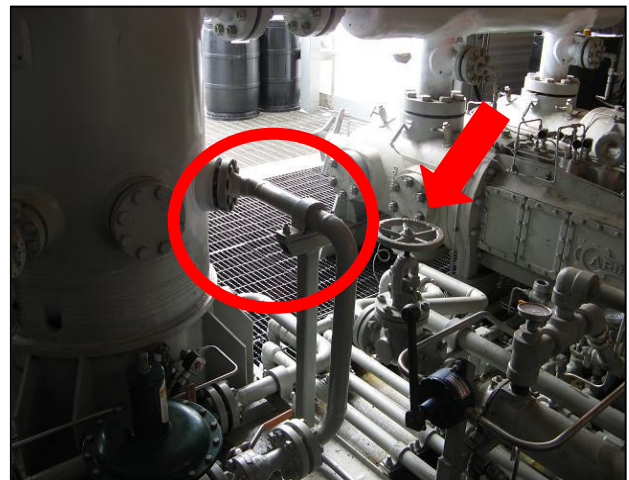
A worker was injured when he fell while standing on piping to complete an ultrasonic inspection.

**Description of Incident:**

A worker was trying to reach an inspection point on a suction scrubber for ultrasonic survey. While standing on piping approximately 2 feet above floor level, the worker slipped and fell. His face struck a valve causing a laceration to his nose. The worker required 8 stitches.

Other relevant incident information included:

- A hazard assessment was completed, however it did not identify fall hazards and working from temporary work platforms.
- The company procedures for access to vessels were neither followed nor enforced.
- A ladder was available in the crew truck and would have been the correct equipment to use as temporary work platform.
- The crew supervisor did not adequately monitor the young worker and failed to give clear direction for reaching the testing location.



Photograph showing the piping where worker was standing and the valve he injured himself on after he fell.

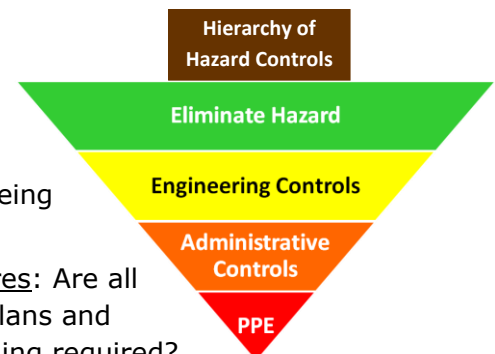
**Recommendations for Preventing Future Incidents:**

This incident provides an opportunity to look at two different aspects of job safety:

**1. Roles and Responsibilities**

Supervisors and workers need to consider the following questions before beginning work:

- Field-level Hazard Assessments: Have the job hazards been reviewed and discussed? More importantly, what steps are being taken to control the hazards identified and reduce job risks?
- Confirmation of Required Work Plans, Practices and Procedures: Are all workers familiar with the required work practices. Do work plans and procedures need to be revised? Is additional on-the-job training required?
- Communication and Enforcement of Basic Safety Rules: What basic safety rules apply to the planned work activities? Are these rules being monitored and enforced by both supervisors and other workers?



A summary of basic ladder safety rules from the Alberta OHS Code are summarized on page 2.

## 2. Applicable Rules and Regulations

The incident is also a reminder that fall hazards can exist when working above floor level. Employers are reminded that workers must be protected from falling from temporary or permanent work area. Written fall protection plans are required if there is a possibility that the worker could:

- fall from a height of 3 metres or more,
- fall from a height of less than 3 metres and there is an unusual possibility of injury, or
- fall into or onto a hazardous substance or object, or
- fall through an opening in a work surface.

Section 8.0 of the Alberta OHS Code interprets “an unusual possibility of injury” to be situations where the injury may be worse than an injury from landing on a solid, flat surface. Other jurisdictions have similar rules.



**REMEMBER:** Slips, trips and falls are one of the leading causes of worker injury in the oil and gas injury. Entry and exit routes must be kept clear of obstructions to ensure work areas can be safely accessed and exited. Basic safety rules for ladder use need to be respected.

### Excerpts from Part 8 of the Alberta OHS Code 2009 Explanation Guide

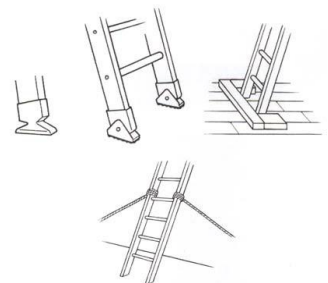
**Is a ladder the best choice?** Before using any ladder, the following questions should be asked:

1. Is using a ladder the safest and best way to do the job?  Yes  No
2. Is the ladder in good condition and suitable for the type and height of work?  Yes  No
3. Can the ladder be positioned close enough to the work area so that the worker using it won't overreach?  Yes  No
4. Can the ladder be secured at both the top and bottom?  Yes  No
5. Is the surface supporting the ladder at its base firm and level?  Yes  No

If the answer to any of these questions is No, consider another method of gaining access to the work area.

#### Basic Rules for Ladder Safety

- Always face the stepladder treads when using a stepladder.
- Never use a stepladder for entry to or exit from another work area.
- Never lean to one side or overreach while using a stepladder.
- Unless permitted by the stepladder manufacturer, never use a stepladder as a support for a working platform as the ladder is too unstable.
- Always visually inspect the ladder before each use.
- Always place a stepladder on a firm, flat surface.
- Do not place a stepladder on boxes or scaffolds to gain extra height.
- Always take care when positioning a stepladder in corridors or driveways where it could be hit by a person or vehicle. Set up suitable barriers where necessary.
- Set base on secure, even surface. Shim the base if necessary



#### Contact:

[safety@enform.ca](mailto:safety@enform.ca)

#### DISCLAIMER:

This Safety Alert is designed to prevent similar incidents by communicating the information at the earliest possible opportunity. Accordingly, the information may change over time. It may be necessary to obtain updates from the source before relying upon the accuracy of the information contained herein. This material is presented for information purposes only. Managers and supervisors should evaluate this information to determine if it can be applied to their own situations and practices.